

DryTrack Update 2008



It is two years since DryTrack in-kiln systems were introduced into the USA Lumber market. DryTrack is now working in 18 sites, with over 65 kilns throughout the USA from the Pacific North West to the SYP markets of the South East.

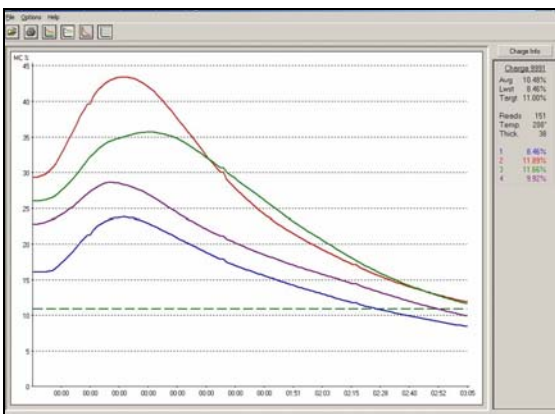
The current slowdown in the USA Lumber market is expected to continue throughout 2008 and has affected operations significantly both in the USA and Canada. Capital Expenditure on sawmilling equipment has been adversely affected by the market downturn. This has forced operators to consider projects requiring smaller amounts of capital that will give a significant return on capital invested.

DryTrack's benefits meet these requirements admirably. For a small outlay sawmills will have improved grade recovery in their operation. The system can give a payback period of a **3- 6 months** in most situations.

In particular sawmills have found DryTrack to give an improved grade recovery in terms of first grade lumber produced in some cases as much as 5 – 10%. This represents a significant increase in revenue. In the current market this increased revenue can be critical to the long term profitability and survival of a sawmill.

The benefits of installing a DryTrack:

- Improved grade recovery
- Reduced drying time
- Increased Kiln production
- Elimination of hot checks
- Ability to maintain consistent quality
- Increased revenue



There are very few if any other pieces of equipment that will give the same returns as a DryTrack system.

KDS/ Windsor Technology Partnership



In the USA Southern Yellow Pine market, Windsor and KDS (Kiln Drying Systems & Components, Inc.) have been aggressively working together in several key areas. KDS is the Southeastern USA representative for the DryTrack In-Kiln Moisture Measurement System with its main business being the sale, manufacture, and installation of lumber dry kilns. KDS builds kilns for Hardwoods and Southern Yellow Pine, in addition to Green Sawdust Burner Systems for direct fired kilns. KDS has sold and installed DryTrack systems on 19 kilns in the SYP market.

The latest drying technology in the USA SYP market is the Continuous Drying Kiln or "CDK". This innovative approach to lumber drying provides a perfect match for the Windsor and KDS product lines and talent pool. Through the joint effort of our two companies, Windsor, using its engineering knowledge and extensive lumber drying design experience, and KDS, providing its expertise on the burner and direct fired kiln side, has resulted in a formidable partnership team.

Rob Girardi of KDS says "Combining the Windsor Dryspec controls, CDK drying technology, KDS direct fired systems, and DryTrack Echo, has presented the market place a drying system that cannot be matched by any other competitor. With the market in the U.S. in very rough condition it has not been easy. We hope to have our first major order soon."

Peter McKee of Windsor Technology explains "We were introduced to KDS through our links with DryTrack and quickly came to recognise the value in a potential collaboration. From small beginnings such as sharing ideas, goals, premises and access to local manufacture we're now jointly working on several important dry kiln projects."

"The opportunity to introduce leading edge technology, excellent engineering, strong project management and expertise in wood science and drying technology are the drivers behind our collaboration for the benefit of our customers" says Keith Robertson of Windsor Technology.



Peter McKee



Rob Girardi



Keith Robertson

Continuous Drying Kilns – CDK

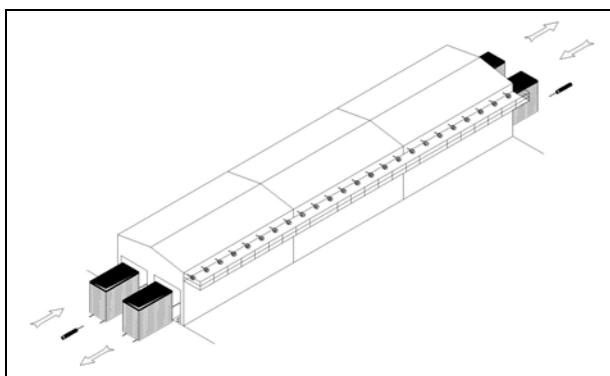
The Windsor Technology kiln range includes two CDK configurations and the “reverse flow double track” design is attracting significant interest in the USA market.

This design incorporates a central heating/drying section with cooling/equalizing/pre-heating sections on each end. Lumber moves from one end of the CDK to the other at a rate controlled by the moisture content of the lumber in the central drying section using DryTrack Echo.

The lumber on each track moves in opposite directions which facilitates the transfer of heat/energy from the hot dry packs to the cold wet packs. Moisture from the "green" pack creates a very efficient conditioning environment for the "dry" pack on the adjacent track.

CDK technology offers significant energy savings and grade improvement benefits.

Windsor Technology CDK’s systems are available in both direct fired and indirect heated kilns as a new kiln or as a retro-fit for existing kilns.



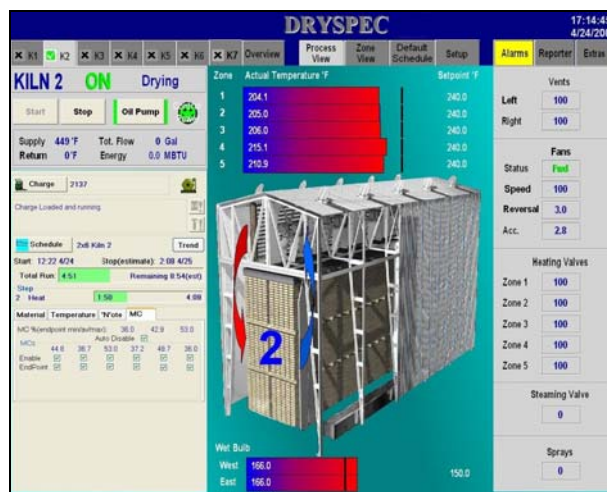
Windsor Technology is a licence holder for the CDK IP owned by Andy Pollard of Pollard Lumber.

Dryspec 2000

Dryspec 2000 is an advanced PC and PLC based lumber drying management system. Dryspec 2000 provides centralised control and databasing of any number of lumber drying kilns either direct or indirect heated. The user interface has been designed with graphics that show at a glance the conditions inside each chamber.

Dryspec 2000 provides integration of any Green Mill, In Kiln and Dry Mill moisture measurement system and can generate reports showing initial and final

moisture contents based on packet numbers for tracking and quality control purposes. The in kiln moisture readings are also used by Dryspec 2000 to perform moisture content based zonal temperature control to provide uniform drying irrespective of the initial moisture content.



Dryspec 2000 is available as a base Process Control and Reporting system with several additional advanced Process and Management options available to further improve the management of your kilns. Some of the advanced features are Maintenance Manager, which provides maintenance prompts based on kiln up time, Downtime Reporter that tracks how long and why a kiln has been out of production, Energy Management which helps smooth the load on the heat plant, Paging System that sends informative text messages to kiln supervisors and operators enabling faster responses when action is required.

